



FastBEAM™

BEAM—DRILL—COPING—SAW LINES



Easy Structural Part Programming

QUICKLY ENTER DATA DIRECT FROM SHOP DRAWINGS

FastBEAM™ is a simple, fast way to program Beam-lines, Angle-lines, and Flat Bar Processors. These machines are used for drilling, punching and cutting of rolled shapes such as Beams, Channels, Angles, and Flat Bars. The program is 'universal' - it has a common data entry procedure, allowing preparation of NC programs for different machines with the same procedures. FastBEAM™ is proven to be one of the easiest programming systems to use on these types of machines and can be adapted to new machines with retro-fitted CNC's.



- Full graphic display for accuracy
- Provision for drilled holes, penetrations and slotted holes
- Verification Dimensioning for accurate checking
- Optimized drill sequencing minimizes machine travel
- Concatenated (nested) programs
- Easy to use graphic coping and mitering makes programming a breeze

HIGHLIGHTS:

- UNIVERSAL SYSTEM
- PC-WINDOWS
- SUPPORT FOR 3D CAD DETAILING SYSTEMS VIA DSTV
- COPING, MITRES, PENETRATIONS
- OPTIONAL DSTV OUTPUT
- VISUAL VERIFICATION

Features:

Includes comprehensive product catalog

Supports manual data input and DSTV format files

Easy, spreadsheet data entry with cut & paste functions

Ability to add sections, including non-standard sections

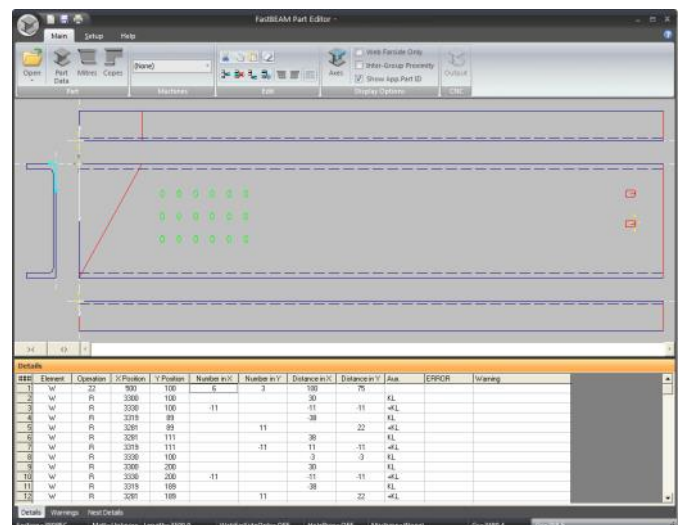
Ability to modify sections as well as define/import aliases

Contains all data for most structural sections

*Suitable for Peddinghaus, Ficep, Vernet, Kaitenbach, Wagner & most saw/drill/punch lines

VERIFICATION OF DATA

A graphics screen is used for visual checking of data and it will ensure that holes are not drilled in the mitred region. It also has provision for flange and web copes, and will drill a hole at the radii of the cope if the radius and position are within the capability of the machine.



*All installations are subject to confirmation of machine setup and configuration.

FastCAM has been supplying PC-based software for Burning, Shearing and Sawing/Drilling machines for over 25 years. The flagship product FastCAM® offers unique integrated postprocessors, NC verification and NC code nesting that still sets it apart from other CAM and CAD/CAM systems. The new generation of FastCAM® software is used in many countries, in many languages and in many different environments.

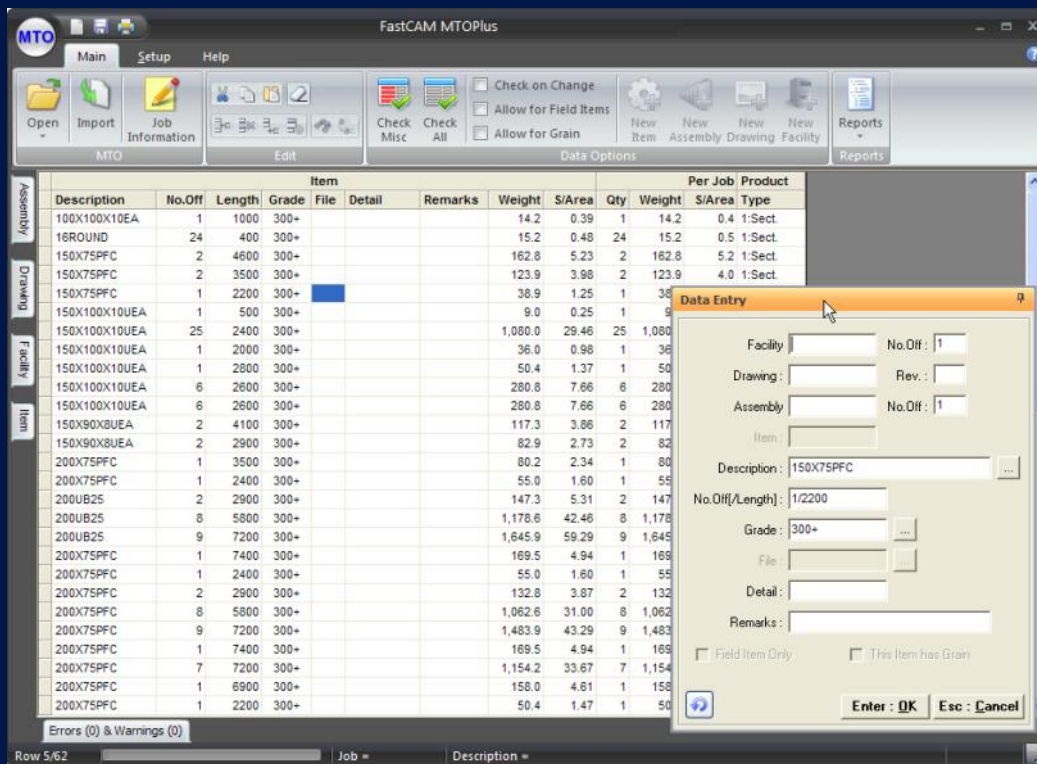
Today the product line has been expanded to include dozens of trademarked products offering a wide range of solutions for glass, timber and metal fabrication. FastCAM has OEM and Business Partners in North America, South America, China, Australia, New Zealand and Europe (Poland, UK, Czech, Hungary). We welcome all enquiries.

FASTCAM WORLDWIDE OFFICES

FastCAM Inc.—USA	FastCAM Pty. Ltd.—Asia Pacific	FastCAM— China	FastCAM— Europe
8700 West Bryn Mawr, Suite 730 South, Chicago, 60631 3507 Phone: 312 715 1535 Fax: 312 715 1536 fastcam@fastcam.com	96 Canterbury Road, Middle Park, Victoria, 3206, Australia Phone: 61 3 9699 9899 Fax: 61 3 9699 7501 fastcam@fastcam.com.au	Zhangjuang Science Park, A-318, 563 Songtao Road,, Zhangjuang , Pudong, Shanghai, 201203 Phone: 8621 5080 3069 Fax: 8621 5080 3071 fastcam@fastcam.cn	Poland service@fastcam.pl

www.fastcam.com

ADD AUTOMATION TO FASTBEAM™ WITH FASTCAM® MTO, A FREE TAKE OFF PROGRAM



FastCAM® MTO provides the fastest method of entering materials into sortable lists for estimating and factory production.

You can also import DSTV and FastBEAM™ files directly so that the information is captured and stored in electronic format.

You'll never have to re-type material lists again!

FastCAM® MTO is free with registration.