

FastCAM[®] SYSTEM

UNIQUE SOFTWARE FOR PROCESSED STEEL DRAW EDIT, NEST, COST & OUTPUT CNC



Best Fit for Metal Fabricators, Steel Service Centers and Structural Fabricators

HIGHLIGHTS:

- PURPOSE BUILT FOR METAL PROCESSING & PROFILING
- INTEGRATED 2D DRAWING SYSTEM AND POST PROCESSOR WITH FULL CAD COMPATIBILITY
- FAST & EASY LEARNING CURVE
- BEST VALUE—AVAILABLE IN 3 EDITIONS PLUS OPTIONAL BEVELING MODULE TO MEET YOUR BUSINESS NEEDS
- OPTIMIZED NC CODE WITH 40+ CONTROLLER COMBINATIONS
- MULTI-LANGUAGE SUPPORT
- MICROSOFT WINDOWS

Features:

Input DXF, DWG, DSTV (NC1) & Vectored PDF files

Output (Fast) CAM, DXF & NC Code

Reverse engineer existing CNC files back to geometry-CAM/ DXF

Secondary process support—Drilling, Marking, Beveling etc.

CAD import cleans & compresses files ready for quality cutting

DXF layer support for different processes

Multi-torch & high-def plasma support

CNC PROGRAMMING MADE FAST & EASY

The FastCAM[®] System has been designed to draw, nest and cut metal as simply and efficiently as possible. Ease of use is as important as the high levels of materials utilization and optimization the software provides.

Draw, Path, Nest and produce NC code from the one system. Or use with your existing CAD system for independent post processing and nesting.

Easy Editing & Verification of geometry combined with one step nesting makes the system instantly productive.

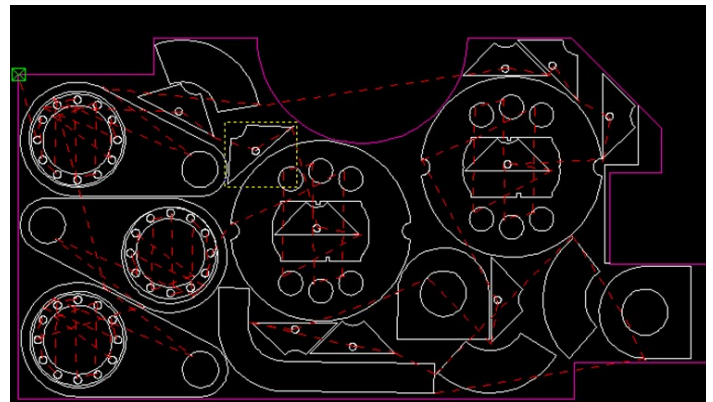
FastCAM's long experience in heavy plate fabrication makes the system ideal for even the largest construction jobs.

FastCAM[®] is used successfully in Service Centers, Shipbuilding, Mining, Steel Fabrication, Metal Fabrication & Sign Cutting.

FastCAM[®] delivers vast improvements in computa-

tion and processing capabilities but maintains its core strengths:

- Easy to Learn
- Simple to Use
- High Performance
- Mature Technology
- Low Cost



SUPPORT FOR POPULAR CUTTING EQUIPMENT

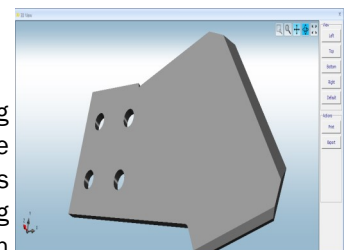
FastCAM[®] supports all combinations of machines and controller as well as ESSi, EIA and ISO NC languages in both inch and metric.

NC output can be Absolute or Incremental.

FastCAM[®] simulates machine operation with CNC on screen

file verification displaying each process by color and line type. Supports multi processes with marking, beveling, drilling and more. Process detection from CAD files by layer.

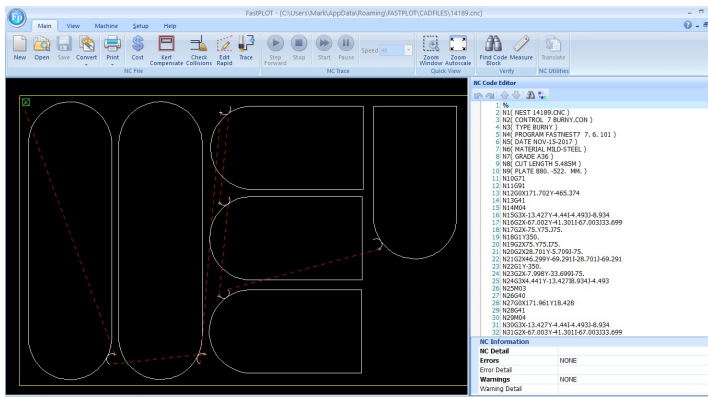
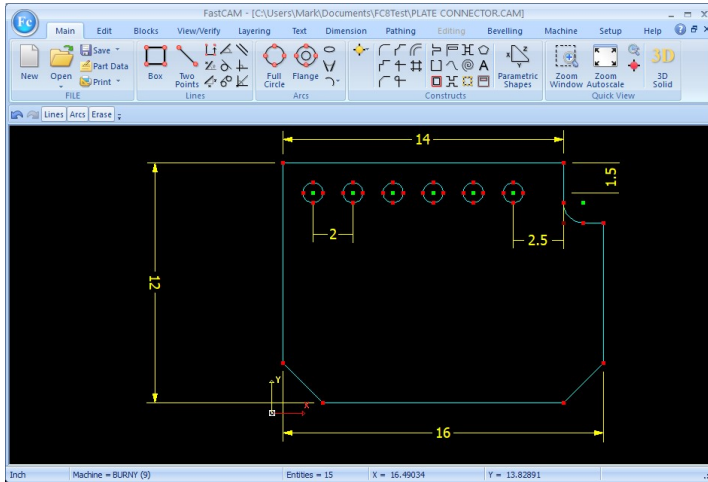
Marking by Powder, Plasma, Pen & Mechanical Scribe for both line & text where supported by the Controller.



Support for multi-pass beveling with 3D verification. Single or Multi-torch, oxy and plasma cutting, Hi-Def Plasma, Laser, Water-Jet plus Oxy and Plasma



COMPUTERIZED CUTTING NEEDS PRECISE, CLEAN GEOMETRY. UNLIKE CAD, FASTCAM'S DRAWING EDITOR IS DESIGNED FOR THE JOB



FastPLOT™ NC Code Editor shows individual processes by color and line type. Interactive editor shows every move in CNC code.

Graphic Verification of your NC program before you CUT !

FastCAM® is a system built specifically for the high speed production of line drawings. CNC needs every line, arc or entity to be precise, clean connected geometry.

By comparison, CAD was designed to put lines on paper. However today's fabricators are increasingly

supplied job data in a variety of file formats. To solve this problem, FastCAM® will not only load a range of file types, it includes a clever suite of CAD Smart Tools to fix common problems.

Load and fix DXF, DWG, DSTV files. Run CAD Clean and CAD Compress to output optimal CNC for cutting, drilling, marking & beveling

FASTPLOT™ VERIFY CNC & COST JOBS BEFORE CUTTING

- FastPLOT™ Code editor
- Realtime Pan & Zoom
- Plot every code movement
- Find and code block directly in CNC program

for each process and distances as well as net and gross material utilization making it ideal to price individual parts or entire nests.

FastPLOT™ is included in the system to enable users verify or even edit and write NC code with full graphic simulation.

FastPLOT™ will read and convert existing NC code to DXF or CAM formats

Directly Edit NC code to fine tune programs prior to production.

Cost jobs showing total time

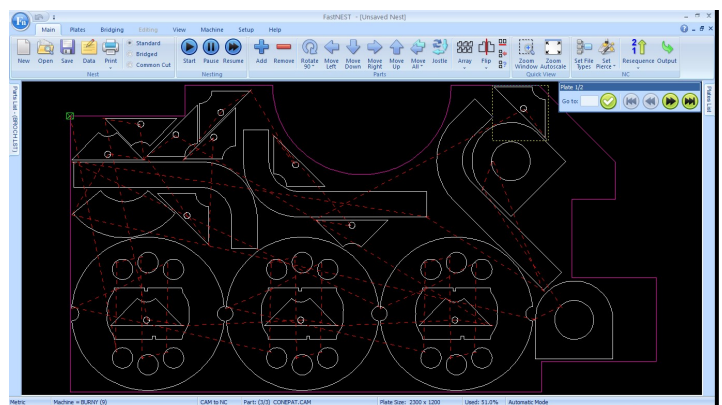
PROGRAM 50% FASTER WITH INTELLIGENT AUTOMATIC PATHING

FastPATH™ will completely analyze a nest and determine which contours are parts and which are holes, no matter how deeply nested.

Entries and exits are added and the software then optimizes the process sequence. Path single or nested parts, including Direc-

tion, Kerf, Entries/Exits, Sequencing, Batch Processing, Hole Avoidance & Tabs.

Add Pre-Piercing for substantial time and consumable savings especially on heavy plate nests.



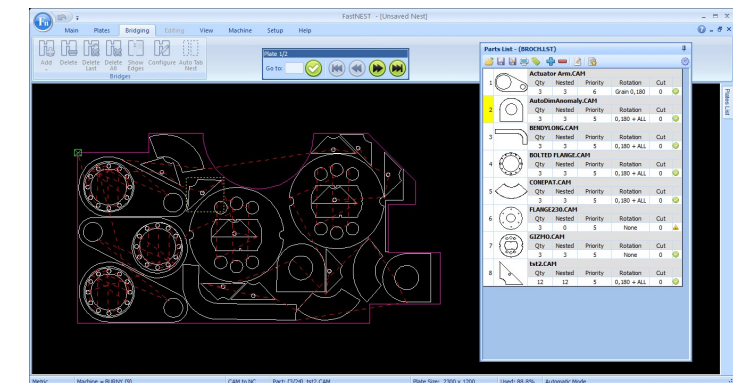


FASTNEST MANUAL & FULLY AUTOMATIC NESTING

FastCAM® Standard & Professional Editions include the FastNEST® nesting module to optimize both the material usage and the sequence of cutting. Parts can be nested automatically or manually placed for maximum productivity.

Nest a variety of file formats with support for all secondary processes like marking. Multiple primary process are also supported including mixed Oxy-fuel, Plasma, Drilling & multi-pass bevel

- Fast 'One click' nesting
- TRUE SHAPE
- Simple & Complex Nests
- Auto Nesting 'Pause'
- Single and auto pair arrays for same parts
- Bulk part input
- Multi Torch, Multi Process.
- Multi plate or Remnants
- Auto Placement of parts



to preset distance.

- Auto plate trim
- 'Jostle' to pack nests
- Post nest optimization inc. Bridging, Tabbings & Stitch Cutting

- Group select and move parts
- Hole avoidance and rapid travel minimization
- Dynamic part rotation
- Move pierce points & entry angle with simple point & click
- Auto-array, columns, rows, offset or "in a box"

CHOOSE FROM 3 EDITIONS TO SUIT YOUR BUSINESS NEEDS

FastCAM® Standard

Drawing with True Shape Semi Automatic Nesting. Single Plate. Feature-rich but manual.

Includes FastCAM® Drawing Editor, FastPLOT™ & FastNEST® Interactive plus smart CAD tools.

Suited to non-critical or non-demanding production levels. E.g. Repetition cutters, low duty cycle.

FastCAM® Professional

Full Shape, Full Auto Nesting, Multi Plate & Remnant plate, Multi input, Multi output. Automatic 'everything'. Ability to move pierce function before and after nesting.

Optional Beveling Module.

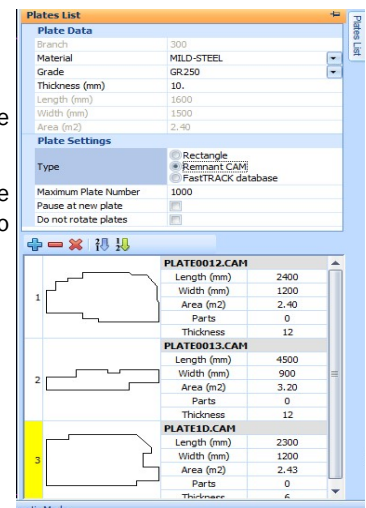
Multi-pass single and double vee with land. Add full bevel details to any part and auto nest.

FastCAM Professional

+ Bevel

FastCAM Professional with the additional bevel module.

Multi-pass single and double vee with land. Add full bevel details to any part and auto nest.

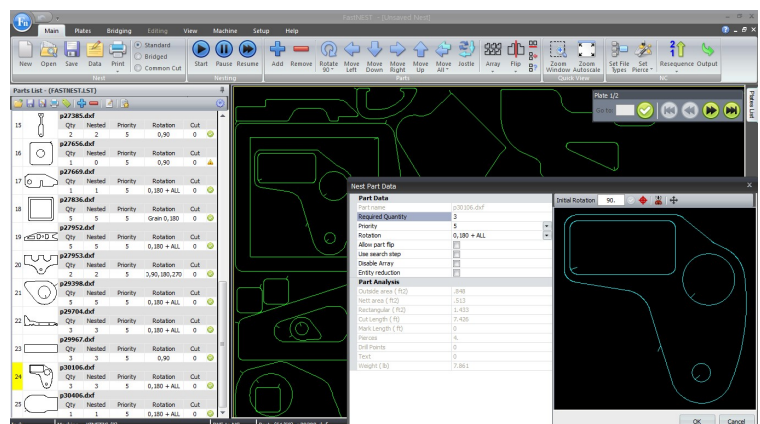


INCLUDES SERVICE MAINTENANCE & TECHNICAL SUPPORT PLUS OPTIONAL WEB TRAINING

The FastCAM® is an annually renewable subscription license

- The subscription includes comprehensive FastCAM Service & Technical Support:
- Unlimited telephone technical support
- 24/7 FastCAM eLearning website

- Remote web support
 - All service pack updates as they become available.
- See our web site for current pricing.



FastCAM has been supplying PC-based software for Burning, Shearing and Sawing/Drilling machines for over 25 years. The flagship product FastCAM® offers unique integrated postprocessors, NC verification and NC code nesting that still sets it apart from other CAM and CAD/CAM systems. The new generation of FastCAM® software is used in many countries, in many languages and in many different environments.

Today the product line has been expanded to include dozens of trademarked products offering a wide range of solutions for glass, timber and metal fabrication. FastCAM has OEM and Business Partners in North America, South America, China, Australia, New Zealand and Europe (Poland, UK, Czech, Hungary). We welcome all enquiries.

FASTCAM WORLDWIDE OFFICES

FastCAM Inc. — USA

Cumberland Metro Office Park
5519 N. Cumberland
1008 Chicago, Ill 60656

Ph: 312 715 1535

Fax: 312 715 1536

fastcam@fastcam.com

www.fastcam.com

FastCAM Pty. Ltd.— Asia Pacific

96 Canterbury Road,
Middle Park, Victoria, 3206,
Australia

Phone: 61 3 9699 9899

Fax: 61 3 9699 7501

fastcam@fastcam.com.au

www.fastcam.com.au

FastCAM — China

No.5, Building 19/498
Guoshoujing Rd
Pudong Software Park, Shanghai
201203 , China

Phone: 8621 5080 3069

Fax: 8621 5080 3071

fastcam@fastcam.cn

www.fastcam.cn

Other Products by FastCAM:

The following are separate programs that can be added to any package or standalone.

FastCAM® Bevel - Precise Weld Preparation.

FastCUT® for Shears & Saws— Rectangular, Linear and Cut to Length optimization for guillotines.

FastCAM® QE—Quotation system with optimization for steel profiles and long products. Complete system for Steel Service Centers.

FastCAM® MTO—Capture steel take-off data electronically.

FastSHAPES® - Development of blowpipes/transitions for all the different segments in the heavy engineering market.

Tradesman in a Box™ - Complete plate development system for hand lofting (without CNC machinery).

FastFRAME® and FastPIPE™ — Tubular and Pipe Development programs for heavy steel.

FastBEAM™ —Program beam lines directly from shop drawings. CNC, DSTV NC 1 output

FastCOPY® —Digitize engineering parts and templates to DXF format.

FastLINK™ —Speed DNC download from PC to cutting machine.

FontGEN—Convert fonts to DXF.

Outline—Convert images to DXF.

FastTRACK® -Remnant Tracking database for Stock & Remnants

FastCAM® QE™

'QUOTE EVERYTHING'

OPTIMIZED ESTIMATES FOR THE SUPPLY OF PROCESSED STEEL
BURNING • SHEARING • SAWING • DRILLING

FastCAM®



www.youtube.com/user/FastCAM Service/