

FastCAM[®] 7

- ✓ PATENTED CUTTING TECHNOLOGY
- ✓ SUPPORT FOR HUGE CAD FILES
- ✓ AUTOMATIC CAD CLEAN/FIX
- ✓ SMART NESTING OPTIONS

TEXT MARKER MARK & IDENTIFY PROFILED PARTS



With FastCAM[®] Professional Edition

PERMANENT MARKING OF LETTERS & NUMBERS ONTO CUT PLATE

Nuts and Bolts:

Included in FastCAM Professional Edition

Converts CAD text into stroke font movements

Select Font Height and Text Angle

Option for all text in a nest to be completed before cutting begins

Support for scribe, Punch Markers, Plasma etch markers, Inkjet

Requires suitable marking device fitted to machine

Limitations for small text using zinc powder markers

FastCAM has the ability to place text on parts for identification during nesting however TextMarker is required if you want to convert the text into machine movements during processing.

Text marking is used for part identification and very popular in Shipbuilding.

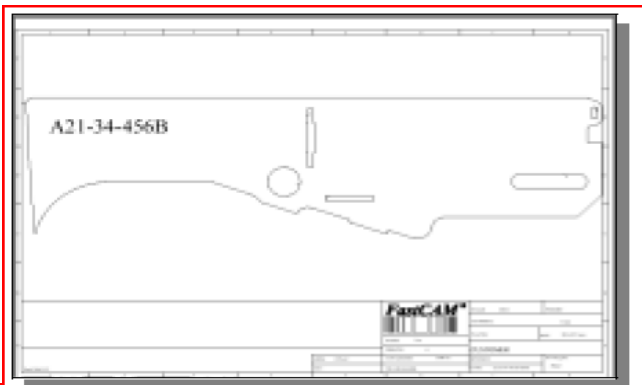
Uniquely, our software uses stroked characters with minimal machine movement which is very useful for lasers and a real boon for plasma machines with plasma markers.

Programming for marking is done in a way similar to part definition using the

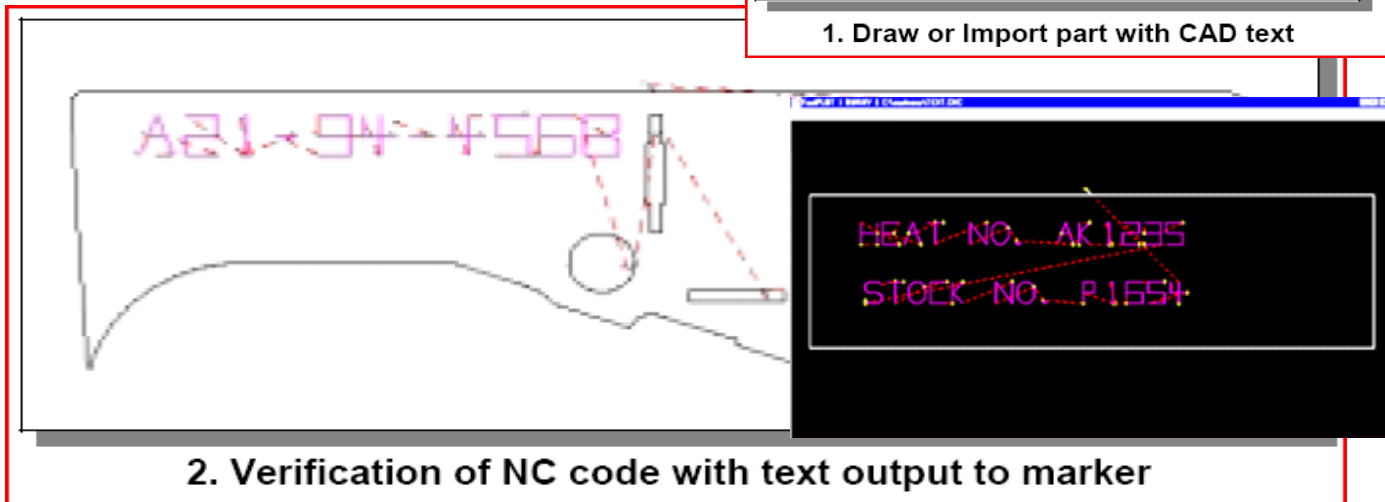
integrated Editor or CAD facility. The software converts the text fonts to machine movements automatically.

The technology utilizes a low plasma torch to write directly onto cut components so it really extracts value from the machine.

Some users have fitted marking pens to the normal torch station for extremely good results where a **semi-permanent mark** is required such as with Aluminium or Stainless Steels.



1. Draw or Import part with CAD text



2. Verification of NC code with text output to marker